

EMPOWERING PENNSYLVANIA'S YOUTH WORKFORCE FOR A PROSPEROUS FUTURE

SkillUp PA, the central driving force for Pennsylvania's evolving workforce is a customized Metrix Learning solution making significant strides in promoting youth training opportunities and seamless transitions to employment. The Metrix Learning team has been working in close collaboration with various agencies and organizations to champion the empowerment of the future workforce with the skills, experiences, and confidence necessary to secure a prosperous future economy.

”



With Metrix Learning, the collaborations, and Act 158, we're going to see this be a really big win for Pennsylvania because we're expanding the credentials statewide.

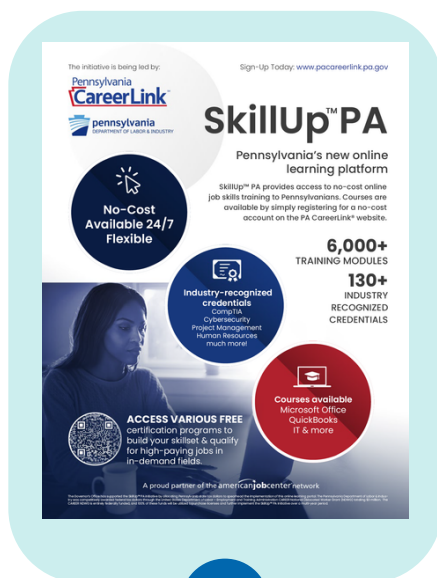
Stephanie Perry,
Digital Equity and Workforce
Specialist

PARTNERSHIPS RESHAPE THE WORKFORCE PATHWAY

Metrix Learning, the Pennsylvania Department of Labor and Industry, and the Department of Education (DOE) have been actively paving the way for Pennsylvania's youth. With consideration to Act 158, a legislative effort to provide an alternative career pathway for students to meet graduation requirements, SkillUp PA is positioned to be the **ideal solution** for the non-traditional post graduation student. While many traditional learners may opt for college or technical schools, Act 158 recognizes that some individuals may prefer to enter the workforce directly or feel unsure about their career future.

One of the key objectives of Act 158 is to provide the option to combine academic efforts with a SkillUp PA course schedule linked to a state-recognized employability certificate. This governor-endorsed seal of employability would be honored by a coalition of employers and workforce development boards in recognizing holders as 'highly prepared' to enter the workforce. Students in possession of this seal or credential would have **higher chances of employment** in occupations that align to their Metrix Learning-acquired skill sets.

The learning portals and their respective curriculums are developed to infuse talent pipelines targeting the industry needs and occupation demands of each community and school district to include credential stacking. In addressing the challenges that commonly impede credential recognition, (alignment of skills requirements, hours, compensation, and labor demand) partners deploy continuous employer and DOE surveying to regularly optimize course content and parallel criteria. Meanwhile, the team developed an **expansive Digital Toolkit** for participating institutions to promote Metrix Learning and Skillup PA resources. The toolkit offers tailored materials for educational institutions, employers, and other stakeholders. Its purpose is to effectively communicate the benefits of metrics and drive efforts to promote digital equity across various sectors. This concerted promotional effort has boosted awareness of Metrix Learning and SkillUp PA as a **household name** linked to accessible learning tools that lead to gainful employment.



As a state, we came together to endorse Metrix Learning, because we all determined from the early successes that it's what was needed for Pennsylvania.

Stephanie Perry,
Digital Equity & Workforce
Specialist

In gathering feedback, employers truly appreciate seeing soft skills or individual certifications from Metrix Learning on a candidate's resume. To optimize the effectiveness and usability of the certificate, the Pennsylvania collaborative plans on conducting surveys requesting needs and preferences as they align to their occupations given that each county and industry recognitions will differ. Ultimately, the goal to align the requirements of each governing agency, organization, and state department will ensure workforce employment across the state. This drive behind the robust collaborative initiative is rooted in the passion and belief of the Metrix Learning system and its malleability to conform to the micro-needs of each industry and community seamlessly.

The collaborative mission to drive digital equity aims to ensure that everyone, regardless of their socioeconomic background or geographical location, has **equal access to digital technologies**. In this endeavor, Metrix Learning plays a crucial role in helping individuals develop the skills required to actively engage in the digital world and thrive in the workplace. In Pennsylvania, various initiatives and collaborations have been instrumental in **bridging the digital divide** and fostering digital equity. These efforts have facilitated economic development progress through the workforce wheelhouse, with the Metrix Learning partnership playing a significant role in this transformation.

Advancing digital equity through collaboration

Pennsylvania's Department of Community and Economic Development (DCED) recognizes the vital role of broadband equity and access in driving continuous progress and prosperity, leading to the **Digital Equity Act**. As part of the workforce supply chain subcommittee, discussions are underway on implementing a digital navigator program, a recognized tool in the field of digital equity. The digital navigator program aims to offer guidance and support to individuals in navigating digital resources and developing essential digital skills.

Integrating skill development programs like Skill Up PA and digital skills training is another key aspect of Pennsylvania's digital equity efforts. The collaboration with the National Governors Association for Workforce Innovation Network (NGA WinRoute) has resulted in the creation of an asset map to identify areas with limited access to digital skills, referred to as **digital skills deserts**. This mapping initiative helps pinpoint regions where additional programming and resources are needed to effectively address the digital divide.



Pennsylvania's libraries also play a vital role in promoting digital equity by offering Skill Up PA, an online resource for training. Skill Up PA, along with other online platforms, **serves as a gateway** to access diverse training opportunities. However, it is crucial to ensure that individuals possess the necessary digital literacy skills to make effective use of these resources.

To address this need, the state has distributed digital literacy grants, and there is a push for a standardized digital skills assessment. While the existing metrics assessment incorporates a digital skills component, efforts are being made to align it with Pennsylvania's specific needs. Collaboration with the Pennsylvania Department of Education (PDE) has emphasized the importance of a digital skills assessment at an appropriate grade level. The Northstar assessment, approved and recommended by the US Department of Education, presents a viable option. Consequently, a statement of work is being prepared to acquire Northstar as a statewide assessment, intending to integrate it into the Metrix Learning platform to enhance digital skills training and diversity initiatives.

By addressing the foundational digital skills gap and providing resources and training programs, Pennsylvania aims to **empower individuals** to access online platforms and seize opportunities in the digital age. Through these collaborative efforts and initiatives, the state is working towards bridging the digital divide and promoting digital equity for all its residents.



✓ BENEFITS



[See What Metrix Learning
Can Do For You](#)

- Whitelisted for secure use
- 24/7 access
- Entry-level workplace skills
- 1 to 3 month certifications
- Mobile & desktop-friendly
- Game-based learning
- 300+ skill tracks and badges
- Much more